

GUARDSMAN VANDAL RESISTANT GSW SERIES

Page 1 of 2

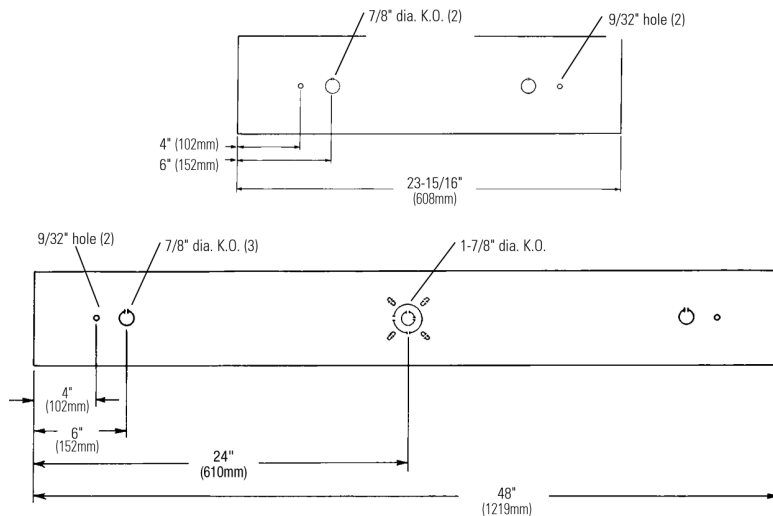
CEILING OR WALL MOUNTED FLUORESCENT
6" WIDTH, 3-7/8" DEEP, 24" OR 48" NOMINAL LENGTH, 1 OR 2 LAMP T8

Features

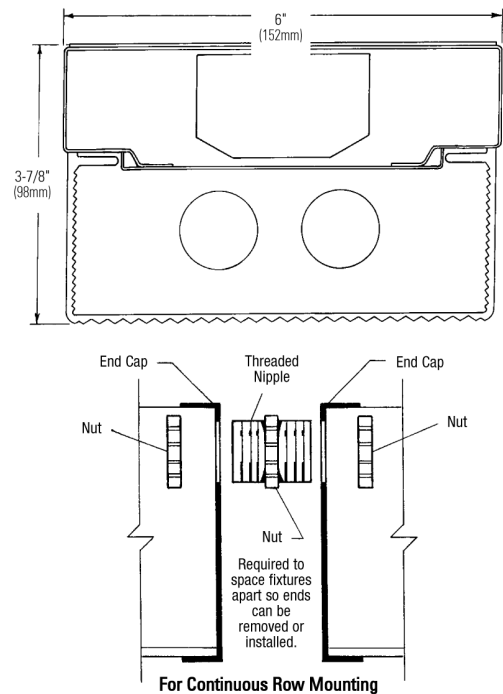
- Excellent for locations where vandal resistance is required, areas such as hallways, stairwells, locker rooms, parking garages and psychiatric hospitals.
- For ceiling or wall mounted applications.
- Can be vertically or horizontally mounted on wall.
- 20 gauge cold rolled steel, post painted, baked white enamel housing.
- 18 gauge cold rolled steel post painted baked white enamel end caps, standard.
- Linear prismatic lens 50% DR (impact resistant) and 50% standard acrylic with nominal thickness of 1/8", withstands 70 ft lbs impact without breaking.
- Tamper resistant holt head screws secure ends to housing.
- Only 3-7/8" deep.
- Nominal 2' and 4' lengths.
- 73.9% efficient (T8 lamps).



Mounting Methods / Features



Dimensions



FIXTURE TYPE	VOLTS
JOB INFORMATION: _____	

GUARDSMAN VANDAL RESISTANT GSW SERIES

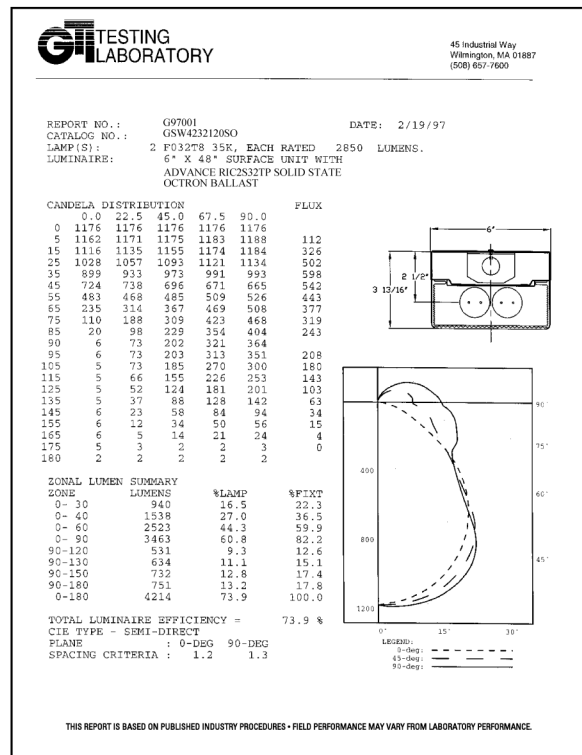
Page 2 of 2

CEILING OR WALL MOUNTED FLUORESCENT 6" WIDTH, 3-7/8" DEEP, 24" OR 48" NOMINAL LENGTH, 1 OR 2 LAMP T8

Photometry

Model No. GSW4232120S0

LER = FP - 62.9 IW - 59.1 BF - 0.88
Comparative yearly lighting energy cost per 1000 lumens = \$4.06



coefficients of utilization — zonal cavity method

RF	20	20	20
RC	80	50	30
RW	70	50	30
room cavity ratio	1	2	3
1	81	76	73
2	73	66	61
3	66	58	51
4	61	51	44
5	56	46	39
6	51	41	34
7	48	37	30
8	44	34	27
9	41	31	25
10	39	29	23

visual comfort probability

room size		ceiling height				ceiling height			
W	L	8.5	10.0	13.0	16.0	8.5	10.0	13.0	16.0
20	20	40	47	58	69	30	39	53	66
20	30	35	40	46	56	20	27	35	48
20	40	33	36	41	47	15	20	26	35
20	60	32	35	38	42	11	15	19	25
30	20	38	45	55	66	32	40	51	64
30	30	32	37	43	52	22	27	35	46
30	40	30	33	38	43	16	20	26	33
30	60	29	32	34	39	12	15	19	25
30	80	29	31	33	37	10	12	15	20
40	20	38	45	53	64	34	42	52	63
40	30	31	36	42	51	24	29	36	46
40	40	29	32	36	42	18	22	26	33
40	60	27	30	32	37	13	16	19	25
40	80	27	30	31	35	10	13	15	20
40	100	27	30	31	34	9	11	13	16
60	30	31	36	41	49	25	31	37	47
60	40	28	31	35	41	19	23	27	34
60	60	26	29	31	36	14	17	20	25
60	80	25	28	29	33	11	14	16	20
60	100	25	27	29	32	9	11	13	17
100	40	29	31	34	40	23	27	30	37
100	60	25	28	30	34	16	20	22	27
100	80	24	26	28	32	13	16	18	22
100	100	23	26	27	30	11	13	15	18

Ordering Information Explanation of Catalogue Number Example: GSW4232120S0

GSW	4	2	32	120	S0	OPTIONS
Guardsman Surface/Wall Vandal Resistant Fluorescent	FIXTURE LENGTH 2=24" 4=48"	LAMP QUANTITY 1 or 2 lamps	LAMP QUANTITY 17 = T8 2' Length 32 = T8 4' Length	VOLTAGE 120 OR 277	BALLAST TYPE <20THD <10THD S0* HI* 1-2 Lamp Elec. T8 PS - LOL Dimming (T8) *Instant Start Standard	Add appropriate suffix to catalog no.

OPTIONS/ACCESSORIES

IN-LINE FUSING: Internal fast-blow fusing. Suffix: F.
EMERGENCY POWER PACK: Factory installed emergency power pack includes charger and inverter concealed in fixture channel. Upon loss of AC power, operates one lamp at reduced light. Suffix: O.

STEM AND CANOPY SETS: Suspends fixture 6", 12", 18" or 24" from surface.

Catalog Number: **ASC6 CSP** (6")
ASC12 CSP (12")
ASC18 CSP (18")
ASC24 CSP (24")

SPECIFICATIONS

MATERIALS: Chassis parts are die-formed 20 gauge cold rolled steel. Refractor—one-piece 50% DR virgin acrylic. End Caps—18 gauge cold rolled steel.

FINISH: Chassis exterior—post painted white baked acrylic enamel. End Caps and Cover—Post painted baked white enamel. Phosphate undercoating.

REFRACTOR: Low brightness linear prismatic lens, 50% DR (impact resistant) and 50% standard acrylic, 1/8" thickness, withstands 70 ft lbs impact.

ELECTRICAL: Thermally protected class "P" ballast C.B.M. approved, non PCB. If K.O. is within 3" of ballast, use wire suitable for at least 90°.

LABELS: I.B.E.W./UL and ULc listed.

Job Information

Type:

Lightolier a Genlyte Thomas Company

Technical Information: (978) 657-7600 - (978) 658-0595

631 Airport Road, Fall River, MA 02720 - (508) 679-8131

C.F.I. Division of Canlyte, Inc.

525 Education Road, Cornwall, Ontario, Canada K6H 6C7 - (613) 938-6221

We reserve the right to change details of design, materials and finish.

© 2005 Genlyte Thomas Group LLC (Lightolier Division)

A0902

Section 6 / Folio U-P10-62

CFI FLUORESCENT